



Chromosome Numbers of Some of the Cactaceae

Author(s): Palmer Stockwell

Source: *Botanical Gazette*, Vol. 96, No. 3 (Mar., 1935), pp. 565-570

Published by: The University of Chicago Press

Stable URL: <http://www.jstor.org/stable/2471509>

Accessed: 30/09/2009 16:11

Your use of the JSTOR archive indicates your acceptance of JSTOR's Terms and Conditions of Use, available at <http://www.jstor.org/page/info/about/policies/terms.jsp>. JSTOR's Terms and Conditions of Use provides, in part, that unless you have obtained prior permission, you may not download an entire issue of a journal or multiple copies of articles, and you may use content in the JSTOR archive only for your personal, non-commercial use.

Please contact the publisher regarding any further use of this work. Publisher contact information may be obtained at <http://www.jstor.org/action/showPublisher?publisherCode=ucpress>.

Each copy of any part of a JSTOR transmission must contain the same copyright notice that appears on the screen or printed page of such transmission.

JSTOR is a not-for-profit organization founded in 1995 to build trusted digital archives for scholarship. We work with the scholarly community to preserve their work and the materials they rely upon, and to build a common research platform that promotes the discovery and use of these resources. For more information about JSTOR, please contact support@jstor.org.



The University of Chicago Press is collaborating with JSTOR to digitize, preserve and extend access to *Botanical Gazette*.

CHROMOSOME NUMBERS OF SOME OF THE CACTACEAE

PALMER STOCKWELL

(WITH SEVENTEEN FIGURES)

Continuing his interest in the cacti (8), the writer has begun a cytological investigation of them, believing that studies of the chromosome numbers of this group might aid in the solution of its taxonomic problems. This paper is a report of preliminary findings in this direction.

Root tips of available species were fixed in a chromo-acetic-formalin mixture used in this laboratory. This formula is designated as CL₉ and is as follows:

SOLUTION A, 2 PARTS	SOLUTION B, 1 PART
100 cc. distilled water	0.5 gm. saponin
10 cc. glacial acetic acid	100 cc. 16% formalin solution
1 gm. chromic acid	
1 gm. potassium dichromate	
1 gm. urea	

(Mix solutions A and B immediately before use.)

The slides were stained with gentian violet, safranin, and orange G as described in a previous paper (7). With this procedure no particular difficulty was encountered in counting the chromosomes.

Eight species or forms of *Opuntia*, one of the more primitive groups of the cacti, were examined. These plants of the flat-jointed, prickly pear type had been transplanted from their natural habitats and kept in cultivation for different periods of time varying from a few months to several years. Of the tribe Cereeae, a highly evolved group, nine species were investigated, most of them being greenhouse seedlings. They included specimens of the giant cactus of the southwestern United States (*Carnegiea*); a giant cactus of northern Mexico (*Lophocereus*); one of the Christmas cacti, an epiphytic form from Brazil (*Schlumbergeria*); one of the porcupine cacti of the California

ture locules are practically filled with the closely packed, crowded seeds, they contain in the interstices a clear, transparent mucilage, hard and brittle in the mature dry fruit but rapidly absorbing water and swelling into a soft gelatinous mass when dampened. Each seed is invested by a somewhat denser sheath of the mucilage. This mucilage is derived earlier in the development from glandular hairs at the base of the ovules. As a rule all the ovaries on the spadix develop seeds, although occasionally there is some abortion.

MÜCKE'S (4) brief description of the fruit of Asiatic *Acorus calamus* is essentially in agreement with this, except that he found fewer

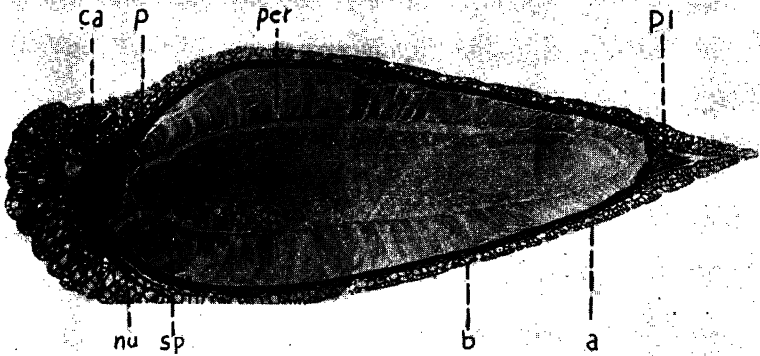


FIG. 1.—Longitudinal section of seed of *Acorus calamus*. $\times 31$

seeds (2-5) in each fruit. EATON (2) likewise described *Acorus* fruit as fewer seeded. Both BRITTON (1) and SMALL (5) describe *Acorus* fruit as "2-3-celled," but in the present material it is regularly 3-celled; empty locules of semi-abortive fruits may readily be overlooked in the dry condition.

The orthotropous seeds are 3-4 mm. long, narrowly ovoid, and somewhat angled as a result of crowding. The chalaza tapers into the short funiculus which may be either straight or curved or nearly absent, depending upon the position of the individual seed in the locule. The outer surface is light brown, speckled with dark brown indentations. Under the microscope it glistens owing to the air filled parenchyma cells that make up the tissue of the testa. This is 3-4 cells thick, soft, spongy, and easily scraped away. When cut

bers. In the species *Opuntia polyacantha*, chromosomes have been counted in specimens from Colorado, Saskatchewan, southern Alberta, and Peace River Crossing in northern Alberta near the station

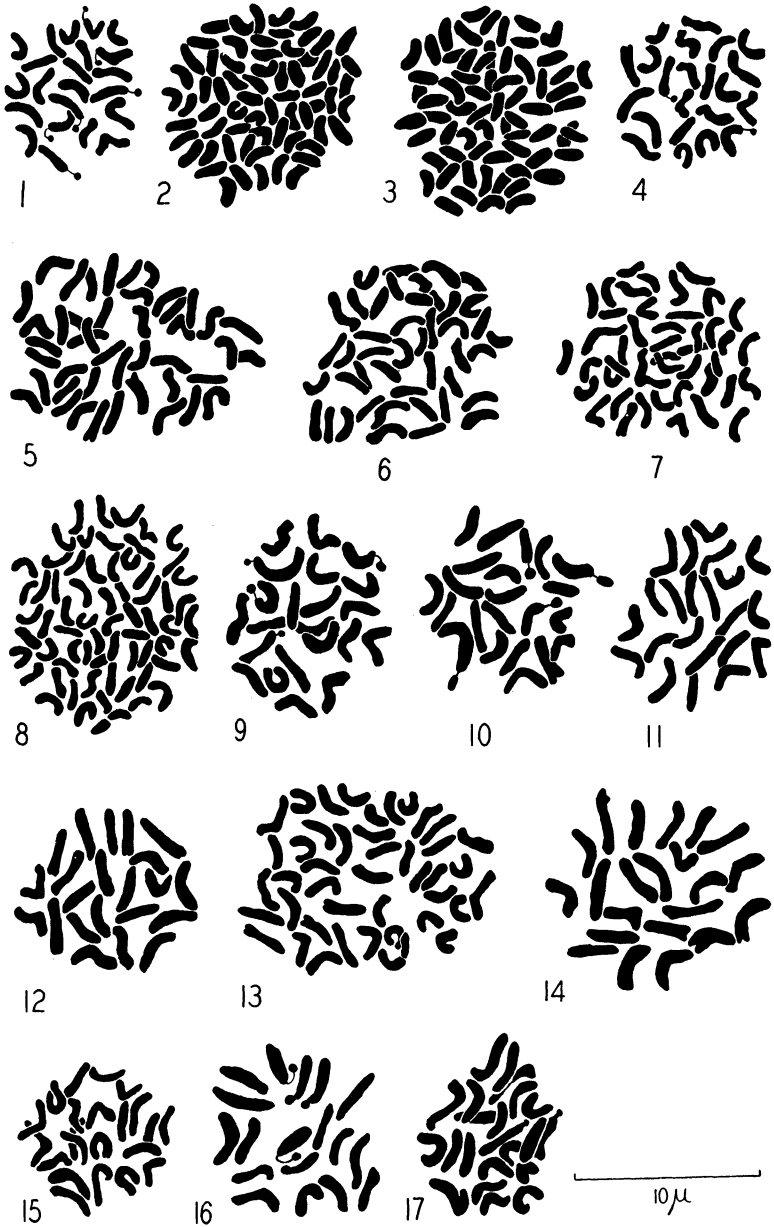
TABLE I
KNOWN SOMATIC CHROMOSOME NUMBERS IN CACTACEAE

FIGURE NO.	NAME	APPROXIMATE DISTRIBUTION	2n
Tribe Opuntieae			
1	<i>Opuntia santa-rita</i> (G. & H.) Rose	Southern Arizona and northern Mexico	22
2	<i>O. phaeacantha</i> Engelm.	Texas to California and northern Mexico	± 66
3	<i>O. discata</i> Griffiths	Southern Arizona	± 66
4	<i>O. chlorotica</i> Engelm.	New Mexico to California	22
5	<i>O. polyacantha</i> Haw.—Colorado Springs	New Mexico to California and north to Canada	44
6	<i>O. polyacantha</i> Haw.—Saskatoon, Saskatchewan	New Mexico to California and north to Canada	44
7	<i>O. polyacantha</i> Haw.—Southern Alberta	New Mexico to California and north to Canada	44
8	<i>O. polyacantha</i> Haw.—Peace River, northern Alberta	New Mexico to California and north to Canada	± 66
*	<i>O. brasiliensis</i> (Willd.) Haw.	Brazil	22
Tribe Cereeae			
9	<i>Carnegie gigantea</i> (Engelm.) B. & R.	Arizona and northern Mexico	22
10	<i>Lophocereus schottii</i> (Engelm.) B. & R.	Northern Mexico	22
11	<i>Echinopsis multiplex</i> (Pfeif.) Zucc.	Brazil	22
†	<i>Zygocactus truncata</i> Schum.	Brazil	24
12	<i>Schlumbergeria russelliana</i> (Gard.) B. & R.	Brazil	22
13	<i>Echinocereus engelmannii</i> (Parry) Rump.	New Mexico to California and northern Mexico	44
14	<i>Ferocactus rostris</i> B. & R.	Southeastern California	22
15	<i>Neomammillaria macdougalii</i> (Rose) B. & R.	Arizona	22
16	<i>N. applanata</i> (Engelm.) B. & R.	Texas	18
17	<i>N. fragilis</i> (Salm-Dyck) B. & R.	Mexico	22
†	<i>N. glochidiata</i> (Mart.) B. & R.	Southern Mexico	24

* Counted by JOHANSEN (5).

† Counted by SUGIURA (9).

for the northernmost collection of cactus known. Of these, the northernmost form, much smaller than its more southern relatives and with smoother pads and fewer spines, had the somatic number 66



FIGS. 1-17.—Somatic chromosome plates from root tips of various cactus species. The numbers correspond to those of table I.

10 days. The radicle is forced through the micropyle as the cotyledon begins to elongate. Almost immediately the radicle turns downward so that the rapidly developing primary root is directly established in the soil (fig. 3 *A, B*). Simultaneously with commencement

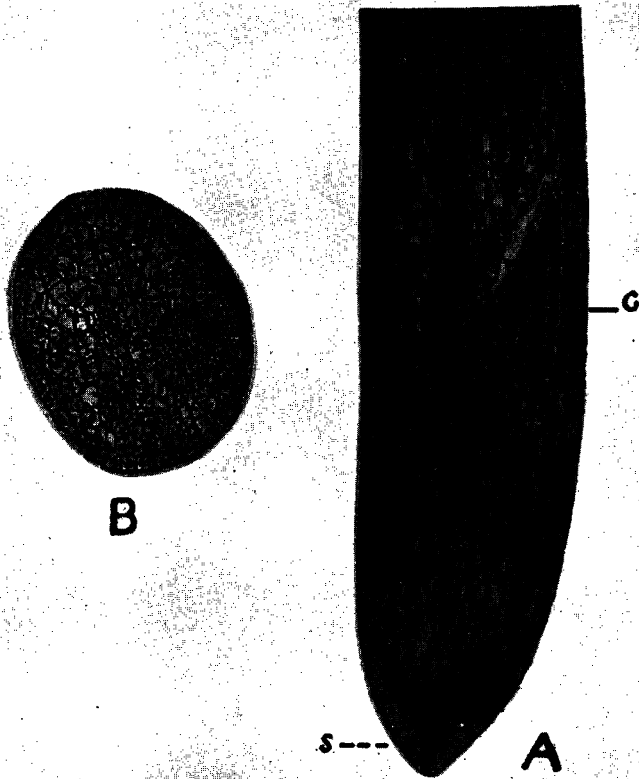


FIG. 2.—*A*, longitudinal section of embryo between *a* and *b* of fig. 1; *B*, cross section of embryo at *c* in adjacent figure. $\times 150$.

of root growth the hypocotyl begins to enlarge slightly (fig. 3 *A, sw*), and at this swelling appears a band of hairs, which doubtless serve as auxiliary organs to absorb water and minerals while the primary root is yet in its embryonic stages (fig. 3 *B, C, D, h*). These primary absorbing organs, together with the immediate production of chloro-

rain forests, and are among the few representatives of the plant kingdom in certain parts of the desert, it is expected that a more exhaustive research from this viewpoint may prove a valuable approach to the problems of plant distribution and the species question.

CARNEGIE INSTITUTION OF WASHINGTON
DIVISION OF PLANT BIOLOGY
STANFORD UNIVERSITY, CALIFORNIA

LITERATURE CITED

1. BRITTON, N. L., and ROSE, J. N., The Cactaceae. Vols. IV. Carnegie Institution of Washington, D.C. 1919-23.
2. HAGERUP, O., Morphological and cytological studies of *Bicornes*. Dansk. Botanisk Ark. 6:1-26. 1928.
3. ———, Über Polyplloidie in Beziehung zu Klima, Ökologie und Phylogenie. Hereditas 16:19-40. 1932.
4. ———, Studies on polyploid ecotypes in *Vaccinium uliginosum* L. Hereditas 18:122-128. 1933.
5. JOHANSEN, D. A., Recent work on the cytology of the cacti. Cactus and Succulent Jour. 4:no. 10. 1933.
6. NAWASCHIN, M., Studies on polyploidy. I. Cytological investigations on triploidy in *Crepis*. Univ. Calif. Publ. in Agr. Sci. 2:394. 1929.
7. STOCKWELL, PALMER, A stain for difficult plant material. Science 80:121-122. 1934.
8. STOCKWELL, PALMER, and BREAZEAL, L., Arizona cacti. Univ. Arizona Biol. Sci. Bull. 1. 1933.
9. SUGIURA, T., A list of chromosome numbers in angiospermous plants. Bot. Mag. Tokyo 45:353-355. 1931.